



The CSPRA

Wave

Volume 21, Number 1

Newsletter of the CALIFORNIA STATE PARK RANGERS ASSOCIATION

Winter 2021

"State Park experts and professionals advocating for State Parks since 1964."

President's Message

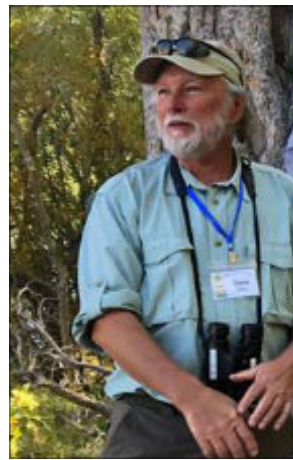
Election to the CSPRA Presidency is a great honor. On January 1st, other newly elected officers and directors joined those whose terms continue into 2021. See the full list with contact information on the following page. Our special thanks go to outgoing officers and Board members, **Mike Lynch, Jeff Price, Kim Preston, Frank Padilla Jr, Steve Ptomey and Joanne Kerbavaz** for their service.

Joanne now steps into the Secretary role, while the new Directors are **Cindy Begbie, Erin Gates, Jon Irwin, and Jean Rhyne**. CSPRA contractors, **Brian Cahill** (WAVE Newsletter editor), **Jeff Price** (Webmaster and elections), and **Betsy Anderson** (Member services) also attended or submitted reports. We have ten standing committees with appointed chairpersons and another ten liaisons maintaining connections with outside organizations. It is an honor to work with such an impressive group of active and retired park professionals from a wide range of classifications who live and work across the state.

The Board met on January 13 via Zoom, and confirmed appointments for all of those committee and liaison positions. I was gratified that almost everyone in those roles agreed to continue serving – a big assist to continuity as my term as President begins.

Two of the many other actions taken at the meeting included adoption of a resolution regarding post-fire restoration of the Big Basin historic park headquarters building, and allowing PRAC (Park Rangers Association of California) to use our Zoom account for their annual meeting in March. We look forward to a strong, supportive relationship with PRAC, perhaps with joint-conferences returning in 2022.

Treasurer **Tom Bernardo** explained why our finances are quite healthy, in part because of savings from canceling the in-person



conference in 2020. Tom is also Treasurer for the Ranger Foundation. The breathtaking effort (among many by the Foundation last year) was providing 56 relief grants to DPR families hit by the 2020 wildfires, totaling

more than \$53,000 in donated funds.

I look forward to quarterly meetings with DPR Director **Armando Quintero**, a long-standing tradition that can keep us informed about the new Director's objectives, while giving us a voice that might benefit those goals. If the COVID-19 pandemic allows, we hope very much that an in-person Annual Meeting & Retirees Rendezvous will happen this September at Donner/ Truckee, with the Director attending. Stay well.



CSPRA OFFICERS

PRESIDENT

Dave Carle, Retired Ranger
(760) 709-1181 dave@cspra.com

VICE PRESIDENT

Ann Meneguzzi, Retired, Sup. Rgr.
(209) 373-9844, ann@cspra.com

SECRETARY

Joanne Kerbavaz, Environmental Scientist, (650) 720-5007
joanna@cspra.com

TREASURER

Tom Bernardo, Retired Ranger/Supt.
(916) 990-2009, tom@cspra.com

DIRECTORS

Miles Standish, Retired Ranger
(831) 466-9789, miles@cspra.com

Jean Rhyne, Interpreter,
(661)753-6233, jean@cspra.com

Cindy Begbie, Maintenance Chief,
530-225-2067, cindy@cspra.com

Erin Gates, Interpreter,
(916) 704-5762, erin@cspra.com

Jonathan Irwin, Ranger SPPO,
(619) 575-3613x337, jon@cspra.com

Neill Fogarty, Supervising SPPO
(707)364-5173, neill@cspra.com

Rob Pickett, Supervising Ranger
(661)618-6924, rob@cspra.com

ADVISOR & PAST PRESIDENT

Mike Lynch, mike@cspra.com

MEMBER SERVICES

Betsy Anderson
(707) 884-3949, betsy@cspra.com

INTERNET COMMUNICATIONS

Jeffery B. Price, Webmaster
webmaster@cspra.com
www.cspra.com

The CSPRA Wave

ISSN 0087-9176
Brian Cahill, Editor
brian@cspra.com

Published by CSPRA, PO Box 3212
Bowman, CA 95604-3212

**Deadline for next issue
April 15**

State Parks on Stamps

It seems by human nature; we all collect something. I am sure many of us collected stamps when we were younger. Maybe like me you still do. My first job was in my dad's stamp store. I know the national parks are represented in dozens of United States postage stamps.

In addition, many countries of the world have postage stamps that depict their national parks. Mike Lynch and I got our photos on Bhutan postage stamps while attending last year's World Ranger Congress.

I wondered, what California state park units are represented on postage stamps? I found five including two from Russia. Here they are:



Año Nuevo State Park
Scott Catalog No. 5298 (n)



Marshall Gold Discovery State Historic Park
Scott Catalog No. 954





Lake Oroville State Recreation Area
 Scott Catalog No. 4056

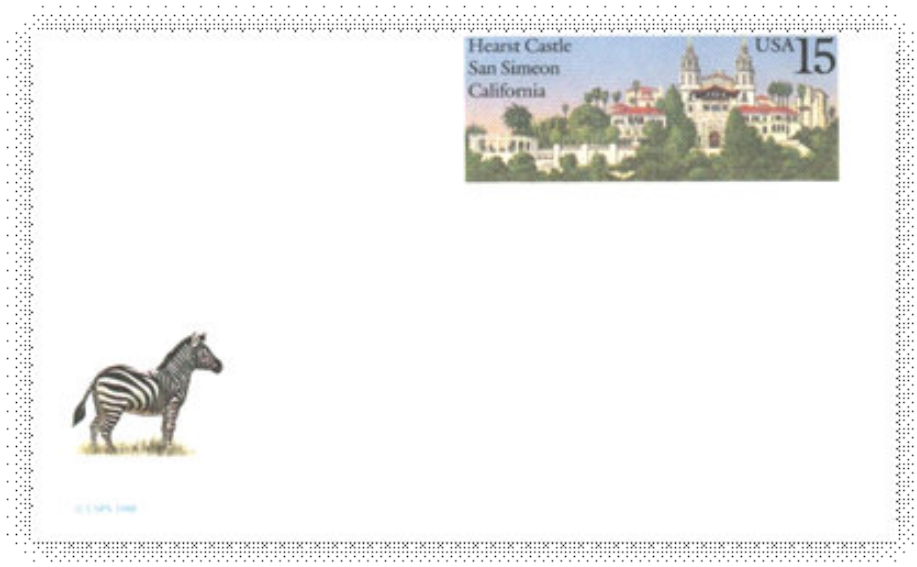
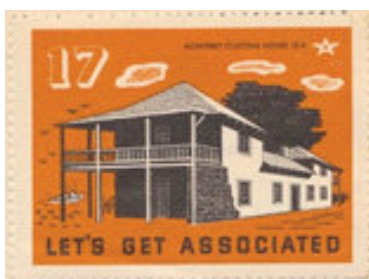
A related item you may encounter are the “Let’s Get Associated” poster stamps created by the Tide Water Associated Oil Company in 1938 & 1939. Of the 200 “seals”, 20 depict California State Park Units.



Fort Ross State Historic Park
 Scott Catalog No. 7397



Fort Ross State Historic Park
 Scott Catalog No. 5973



Hearst San Simeon State Historical Monument
 Scott Catalog No. UX 125

If you know of any others, please share.

Jeff Ohlfs, CSPRA Honorary State Park Ranger
 US Chief Park Ranger (Ret.), Deserttraveler2@roadrunner.com

Overhead Entrance Signs in California State Parks

By Mike Lynch

There have been overhead entrance signs at seven state park units, some of which were erected prior to the site coming into the state park system.

Armstrong Redwoods State Natural Reserve. The overhead sign at Armstrong was probably put up after 1917, when the County of Sonoma purchased the property for a county park. The grove was operated by Sonoma County as a public park until 1934 when the State took ownership.

Big Basin Redwood State Park. The most well-known park overhead signs were located at Big Basin, which was established in 1902 as the California Redwood Park. There were two different overhead signs at the two entrances to the park.

At the main Boulder Creek entrance an overhead sign



The Entrance to Armstrong Woods, Guerneville, Cal.

This image of the “Armstrong Woods” entry sign from a colorized postcard.

was erected in 1917. The wording on the sign was “State Redwood Park - To Be Preserved in a State of Nature”. At the northern

Skyline entrance, a similar overhead sign was constructed, probably sometime after 1917. It read, “California Redwood Park - To Be Preserved in a State of Nature”. In later years, a park residence was constructed right next to the entry sign. In 1950, the California Division of Highways (DOH) took over the park entrance road which became State Hwy. 236. It is not known exactly when the signs were taken down, but it was most likely sometime after DOH took over the road.

Henry Cowell Redwoods State Park. The park was formed in 1953 from a private resort and the adjoining Santa Cruz County Big Trees park. The park also had a pedestrian arch entrance sign probably erected in the 1930s.

By the 1940s, a ranger gatehouse residence had been built next to the Skyline entrance sign.





This image of the Henry Cowell entrance sign appears to be from the 1930s.

McArthur-Burney Falls Memorial State Park. The park was established in 1926. The overhead entrance sign was constructed by the Civilian Conservation Corps (CCC) who worked in the park from 1934 to 1937. (Not shown)

Mt Diablo State Park. Mt Diablo was established in 1921 and had its own governing commission until establishment of the state park system in 1927. The entrance to the park used the former toll road station.



Below: This image, from a postcard, is of the "South Gate" entrance to Mt Diablo and dates from the 1930s.



Pismo Beach - Oceano Dunes State Vehicular Recreation Area. In 1934, California State Parks first acquired the land that is now known as the Oceano Campground. Today, the Oceano Dunes District includes Pismo State Beach and the Oceano Dunes State Vehicular Recreation Area. Historically, Pismo Beach was famous for Pismo Clams and off-highway motor vehicle recreation on the beach.

Left: In the 1960s, this wooden ramp at the end of Pier Avenue provided vehicle entry to the Pismo Beach. It had large overhead sign featuring Pismo Clam regulations.

Portola State Park. In 1924, the Islam Shrine, a body of the Masonic Lodge, developed a redwood grove for its members' use. The Shriners built cabins, kitchens, restrooms, a stage and a recreation hall which is the present-day visitor center. They would have gatherings with hundreds, sometimes thousands of people. The area became a state park in 1945 and was originally named Islam Redwood Shrine State Park. It was soon thereafter renamed Portola State Park. The Islam Redwood Shrine had an overhead entry sign.



The entry sign for the Islam Redwoods Shrine from the 1930s.

Improve Your Financial Well-being

Financial wellness is about establishing overall financial health and learning how to successfully manage your finances. Achieving financial wellness means meeting your financial obligations, feeling secure about your financial future, and being able to make choices that allow you to enjoy life. Take some time and start thinking about steps you can take towards your own financial well-being.

Follow the 50-30-20 rule. This simple rule can help put you on the right path with your financial goals and aspirations. Allocate fifty percent of your income to primary “needs,” which is everything you must have to live: rent, mortgage, utilities, food, and insurance. Twenty percent is set aside for “savings,” which allows you to save for retirement, cover small emergencies, tackle long-term debt, and absorb other periodic expenses. The remaining thirty percent of your budget is allocated under the “wants” category, which is anything that puts a smile on your face like a vacation or new shoes. Having financial discipline and allocating your income according to the 50-30-20 rule, puts you in the best position for a brighter financial future.

Track your spending. Following where your money



goes, identifying spending leaks, gauging your budget and monitoring your progress is essential to financial wellness. It may seem overwhelming or a challenge to rein in spending, but there are lots of tools available to help get you started. Try an online tool, app, or just start writing it down. After adding up your expenses, you might find an extra \$50 that can go towards debt.

Tackle your debt. Debt comes in many forms and can cause anxiety and stress. According to Experian’s 2019 Consumer Debt Study, Californians carry an average of \$6,222 in credit card debt. For many workers, student loan debt is the greater hardship. To make matters worse, most California state workers took a substantial pay cut this year.

It may seem insurmountable, but paying off your debt can be a

reality. If you are motivated by small, frequent successes, try the debt snowball method where you pay off your smallest balance first. Compare your interest rates and consider consolidating your debt, refinancing your mortgage, and transferring your balances. Some banks are providing relief by pausing payments, forgiving late fees and eliminating interest charges.

Attend a FREE “Budget like a Champ!” Savings Plus webinar on 2/10/2021 (10:30-11:30 AM) or 3/10/2020 (10:30-11:30 AM) To learn about other strategies and tools to set yourself up for success, contact davide.bolognesi@calhr.ca.gov or spptraining@calhr.ca.gov.

Savings Plus, a Division of CalHR, manages the state’s 401(k) and 457(b) plans. Additional webinar topics include Social Security, preparing for retirement, tax efficient retirement planning, and investing options. For a complete list of available webinars, select Savings Plus Events at the bottom of our home page at savingsplusnow.com. Additionally, you can meet virtually with your licensed Retirement Specialist to discuss your personal situation. To learn more about the Retirement Specialist in your area, please visit the “Meet Your Retirement Specialist” page on savingsplusnow.com.

The Poet Ranger

Six A.M. and there's work to be done.
The Poet Ranger rolls out of his rack
his callused feet hitting the floor
while his sunburned hand
hits the Off switch
on the clock radio.

Sliding into his uniform—
worn shorts
slightly stretched out T-shirt
possibly mismatched socks
he struggles into his second-best pair
of boots and makes a pit stop before starting out.

One last check in the mirror
in the hallway
yes, that's it—
rugged but tidy.
Pulling on a random ball cap
(so as not to call attention to himself)

Or his hair in need of a trip
to the Barber College
he locks the door
behind him
and sets out
on Donut Patrol.

Down the street
around the corner
through the park.
All seems to be in order
as he reviews
his mental patrol log

noting the occasional aluminum can
to be crushed and recycled
on the return.
Greeting the baker
at Sunshine Donuts
on this foggy morning

he requests a couple
of glazed Pine Cones
and a Cup o' Joe
for irrigation
scans the counter landscape
and returns to the trail.

Cans in one hand
crullers in the other
he is greeted back
at the station
by the Chief Ranger
and the Patrol Dog (Retired)

both of whom want
a full report
on the Poet Ranger's
early morning
reconnaissance.

He shares his stories
of adventure and wonder
as well as the donuts,
as they plan
the rest of their day.

— By Bob Pavlik



A popular postcard in 1957, depicts a state park ranger in front of the walk-through entrance to Henry Cowell. The caption reads, "Park Gateway - Henry Cowell Redwoods State Park".

Celebrating a Centenarian

By Ann Meneguzzi

Columbia State Historic Park's streets are regularly vehicle prohibited so visitors can enjoy strolling through the Gold Rush town as if they had gone back in time. But an exception to the auto ban was made for a special celebration on Friday November 6, 2020. That morning, a one-truck parade began on the Park's usually car-free streets to honor the 100th birthday of retired Columbia SHP Chief Ranger Neil Power.

Despite cold and cloudy weather, the day brightened when Neil Power appeared in a spiffy, green antique Power Wagon with era appropriate DPR signage decals. CSPRA members & Columbia residents **Kim Baker** and **Sherrin Grout** were vital in arranging for local permissions so that Neil could enjoy being both Honoree and Grand Marshal in the unique parade. A socially distanced array of



his family, friends, current and former Park staff, town folk, local media, and bemused Columbia visitors stood along the street to watch. Onlookers cheered and applauded during Neil's 4 block journey on Main Street as he rode in the polished green 1964 Dodge Power Wagon driven by Sherrin's husband. Marching behind in dress uniform was Neil's granddaughter **Jessica Power**, City of Petaluma Fire Marshal.

CSPRA officers **Tom Bernardo** and **Ann Meneguzzi** were there to recognize Neil's 100th birthday with a proclamation scroll and handsome plaque noting his many years of public service.

The scroll and plaque showcased the CSPRA Board Resolution that commended Neil Eugene Power for his honorable service to the United States as a US Navy Seaman during World War II and also for his distinguished career in California State Parks from 1948 until his retirement as the Columbia SHP Chief Ranger in 1980.

Neil's smiles and waves, as well as the cheers from those who came to honor him gave the event a special glow. A successful and happy celebration!



Presentation of resolution with Neil's granddaughter Jessica Power, City of Petaluma Fire Marshal. Photos by Tress Putnam

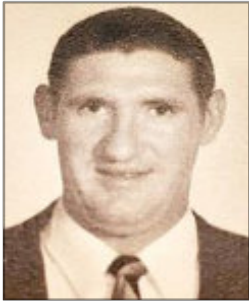


Chief Ranger Neil Power "back in the day" from Ranger's Review and Report July 1968

Wave Goodbye

Ken Mitchell

Kenneth Leroy Mitchell was active in Boy Scouts, earning the rank of Eagle Scout. After high school he attended Michigan State University, graduating in 1963 with a Bachelor of Science in Landscape Architecture.



Park District between 1971 and 1995. While his sons were young; Ken became a coach, manager, and referee for both Foothill Farms Little League Baseball and Foothill Soccer Club. He enjoyed being a very involved father. Later he cheered on his grandchildren's sports.

Ken died from complications from COVID-19 and Pneumonia. 1939 - 2020

He was hired by the State of California Department of Parks and Recreation in 1963. In his 37 years with the department, Ken was generally involved in the planning and acquisition divisions for current and future state parks. He retired in December 2000.

Due to his interest in parks, he became a member of the Board of Directors for the local Sunrise Recreation and

Kathy Ryan

Katherine Ryan is remembered as a great RAO in Northern Region Headquarters. She was super efficient and organized. Upon leaving the northern Region she moved to Oregon working for Oregon Parks and Oregon Highways. She also became an Administrator Assistant to the Governor. She passed away after a long illness.



Park Family Comes Through Once Again!

By Tom Bernardo

The 2020 Ranger Foundation Wildfire Relief effort has ended. Park employees, volunteers and retirees from Berry Creek, Solano County Parks, Armstrong Redwoods, Big Basin Redwoods and many other locations received 56 grants totaling over \$53,000. Camp hosts, equipment operators, park aides, seasonal trail crews, interpreters, admin, rangers and maintenance workers were some of the classifications served.

Twenty-three recipients returned home to find their residences totally destroyed; some lost their vehicles. Donations were frequent and generous. The Ranger Foundation Board of Directors thanks all of those who stepped up and helped make these donations available to so many of our park family members.



McArthur Burney entrance sign in the 1934. The sign hanging from the large redwood log reads, "McArthur Memorial State Park." See story on page 4.

Mixed Metaphors & Malaprops

Mixed Metaphors & Malaprops

By Jeff Price, Seriously Retired

Mixed Metaphor: A combination of thoughts that when strung together produce a ridiculously funny effect of melded clichés. *Send along any overheard slips of the tongue - malaprops@cspira.com*



Group think as a recommended deterrent?

We need to keep working on this coronavirus thing until we achieve herd mentality.

Princess pirates forced guests into the ocean

After 3 weeks we finally walked the plank and got off the cruise ship.

Cuban geography error.

Domestic terrorists should be sent with the others to Guatemala Bay

Locked up?

They sure racked horns over that one!

Dress for success

Restaurants are going out of business due to the lack of costumers.

Up against the wall?

There I was, staring into the precipice . . .

Some of these I just can't explain.

We've passed over a lot of water and had to bite the bullet.



A CCC crew at the Big Basin entrance sign in 1936. The CCC worked at Big Basin from 1933 to about 1939

CSPRA is affiliated with several other non-profit organizations that share our goals.

The Park Rangers Association of California is a professional organization for park Rangers and other employees of municipal, county, special district, state and federal agencies.



The International Ranger Federation supporting the critical work that the world's park rangers do in conserving our natural and cultural heritage.



Federation of Western Outdoor Clubs Promotion of the Proper Use, Enjoyment and Protection of America's Scenic Wilderness and Outdoor Resources.



Association of National Park Rangers communicating for, about and with National Park Service employees of all disciplines and providing a forum for professional enrichment



California Park Hospitality Association representing companies and individuals who provide hospitality services under contract with the California State Parks.



California League of Park Associations supporting the Non-profits that are partners with State Parks.





www.CSPRA.com



twitter.com/@_CSPRA_



facebook.com/CSPRA

Are you Moving?
Please let us know.
Betsy@CSPRA.com



Member List Server

Sign-up for timely CSPRA news right in your inbox.

Just send your email address (no State emails please) to webmaster@cspra.com with the subject line "add me to CSPRAnet"



Retiring Soon?

If you or a co-worker will be retiring soon, please contact Membership Services Coordinator Betsy Anderson at (707) 884-3949.

betsy@cspra.com.



Already Retired?

Want to keep in touch after you leave DPR? Join Gray-Bears email ListServ - FREE and EASY

graybears@cspra.com

Join CSPRA Or join us online at cspra.com

Name: _____

Address: _____

City _____ State _____ Zip _____

Job Classification: _____

District / Park: _____

Social Security # _____ (req'd for payroll education)

Phone(W) _____ Phone (H) _____

Email: _____

Membership Type (Check one)

- Active \$10/month
- Active Retired \$60/year (\$5/mo.)
- Supporting \$36/year*
- Organization \$50/year*
- Benefactor \$1,000/life*

* Please include check for 1 year's dues for these membership levels.

I hereby authorize the State Controller to deduct from my salary and transmit as designated an amount for membership dues in the California State Park Rangers Association. This authorization will remain in effect until canceled by myself or by the organization. I certify I am a member of the above organization and understand that termination of my membership will cancel all deductions made under this organization.

Signature _____

Date _____

Membership by Mail:

CSPRA — Betsy Anderson
PO Box 618 Gualala, CA 95445



The Big Basin Skyline entrance sign in the 1920s. The vehicle reads, "Big Basin Stage." Story on page 4.

California State Park Rangers Association

CSPRA is an organization of State Park professionals dedicated to advancement of the highest principles of public service, established to support and preserve California State Parks for present and future generations



Founded 1964